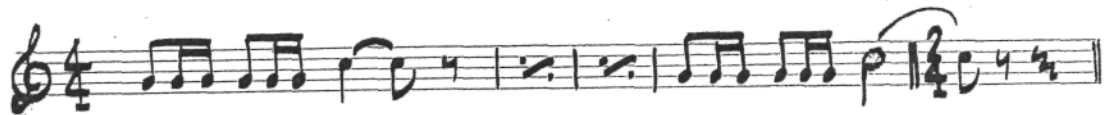


# Honors

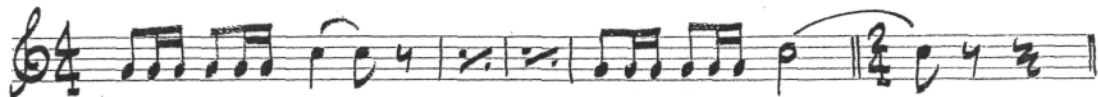
## CORNET 1



## CORNET 2



## CORNET 3



## HORN 1



## HORN 2



## HORN 3




**HORN 4**



Musical notation for Horn 4, featuring a treble clef, a key signature of one sharp (F#), and a 4/4 time signature. The piece begins with a triplet of eighth notes. The melody consists of eighth and quarter notes, ending with a fermata and the instruction "Attaca".

**EUPHONIUMS**



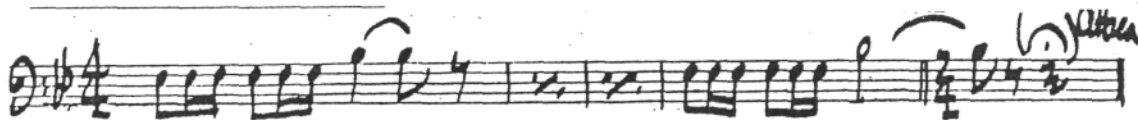
Musical notation for Euphoniums, featuring a bass clef, a key signature of one sharp (F#), and a 4/4 time signature. The melody consists of eighth and quarter notes, ending with a fermata and the instruction "Attaca".

**TROMBONE 1**



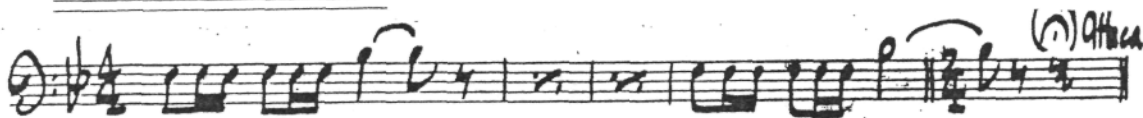
Musical notation for Trombone 1, featuring a bass clef, a key signature of one sharp (F#), and a 4/4 time signature. The melody consists of eighth and quarter notes, ending with a fermata and the instruction "Attaca".

**TROMBONE 2**



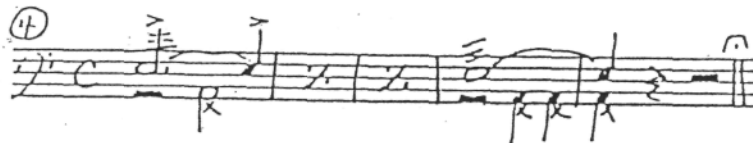
Musical notation for Trombone 2, featuring a bass clef, a key signature of one sharp (F#), and a 4/4 time signature. The melody consists of eighth and quarter notes, ending with a fermata and the instruction "Attaca".

**TROMBONE 3**



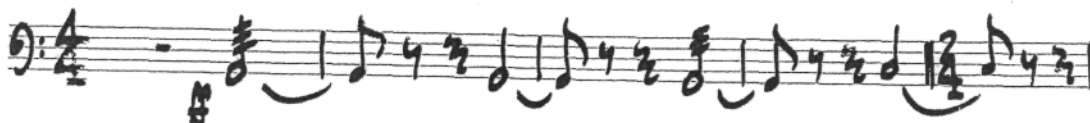
Musical notation for Trombone 3, featuring a bass clef, a key signature of one sharp (F#), and a 4/4 time signature. The melody consists of eighth and quarter notes, ending with a fermata and the instruction "Attaca".

**PERCUSSION**



Musical notation for Percussion, featuring a bass clef, a common time signature (C), and a key signature of one sharp (F#). The notation includes various rhythmic symbols and rests, indicating a complex rhythmic pattern.

**TIMPANI**



Musical notation for Timpani, featuring a bass clef, a key signature of one sharp (F#), and a 4/4 time signature. The notation includes various rhythmic symbols and rests, indicating a complex rhythmic pattern.